



Community Unit School District #205

..... Helping Students Achieve Their Dreams

Curriculum & Instruction

“Happy Holidays”

Upcoming Dates

December 19 – Early Dismissal

December 22 – Winter Break

Begins

January 5 – School Resumes

January 14 - Early Dismissal

January 16 - Teacher Institute

January 19 – MLK Jr. Day

Rigor

Learning experiences that are:

academically,

intellectually,

and personally

challenging! (Webster)

Fitness

Physical Education and physical activity are very important. About one-third of U.S. adults are obese and approximately 17% of children. By incorporating at least 60 minutes of physical activity into your daily life, as well as eating healthy, you will be on the path to a better future. (fitness.gov)

- **Stimulates learning**
- **Increase energy**
- **Relieves stress**

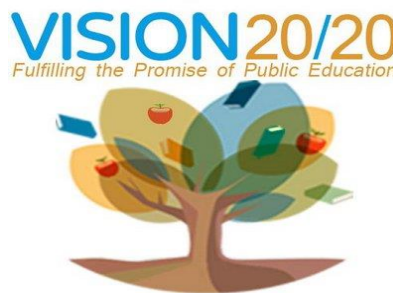
Common Assessments

Common Assessments and **Performance Tasks** are being designed in order to prepare students to understand the **rigor** of the new **Common Core State Standards**. They will provide teachers with an early look into the depth of their students understanding of the curriculum. Educators can use these assessments in order to provide RTI and shift instruction that is required to help students succeed academically.

Webb's Depth of Knowledge represents the cognitive demand of the **Common Core Standards** and the cognitive demand of the assessments given to determine **mastery**. We want to ensure that our students are learning at high levels while being given academic supports. (Edutopia)

Webb's Depth of Knowledge

Level I	-	Recall and Reproduction
Level II	-	Skills and Concepts
Level III	-	Strategic Thinking
Level IV	-	Extended Thinking



How will we succeed?

Unity is strength... when there is teamwork and collaboration, wonderful things can be achieved.

Mattie Stepanek

Webb's Depth of Knowledge (Brief Overview)

Level I Activities	Level II Activities	Level III Activities	Level IV Activities
<p>Recall elements and details of story structure, such as sequence of events, character, plot and setting.</p> <p>Conduct basic mathematical calculations.</p> <p>Label locations on a map.</p> <p>Represent in words or diagrams a scientific concept or relationship.</p> <p>Perform routine procedures like measuring length or using punctuation marks correctly.</p> <p>Describe the features of a place or people.</p>	<p>Identify and summarize the major events in a narrative.</p> <p>Use context cues to identify the meaning of unfamiliar words.</p> <p>Solve routine multiple-step problems.</p> <p>Describe the cause/effect of a particular event.</p> <p>Identify patterns in events or behaviors.</p> <p>Formulate a routine problem given data and conditions.</p> <p>Organize, represent and interpret data.</p>	<p>Support ideas with details and examples.</p> <p>Use voice appropriate to the purpose and audience.</p> <p>Identify research questions and design investigations for a scientific problem.</p> <p>Develop a scientific model for a complex situation.</p> <p>Determine the author's purpose and describe how it affects the interpretation of a reading selection.</p> <p>Apply a concept in other contexts.</p>	<p>Conduct a project that requires specifying a problem, designing and conducting an experiment, analyzing its data, and reporting results/solutions.</p> <p>Apply mathematical model to illuminate a problem or situation.</p> <p>Analyze and synthesize information from multiple sources.</p> <p>Describe and illustrate how common themes are found across texts from different cultures.</p> <p>Design a mathematical model to inform and solve a practical or abstract situation.</p>

Music & Young Minds

Music is academic. A recent study from the University of California found that music trains the brain for higher forms of thinking. Students who took music scored 27% higher on proportional math and fractions tests than those who did not take music. Through songs, students are able to retain complicated math facts, names, dates, and events. Music also creates a positive mood, helps students to relax, and relieves stress and tension. (Johns Hopkins School of Education)



The Benefits of Being Bilingual

Only 20% of the population of the United States is **bilingual**. However, studies show that speaking another language is good for the brain. **Multilingual brains** are nimbler, quicker, and better able to deal with ambiguities. Some studies are showing that it also helps the brain to resist Alzheimer's disease and other forms of dementia. Focusing on remembering and making decisions is very important (Bialystok, 2001). In addition, becoming bilingual supports our **ELL** students. *Matt Jacobson* and *John Pratt* are organizing training for staff who want to learn French. **Duolingo** is a free website and application for students and staff to visit.

Service learning is a *teaching and learning strategy* that integrates meaningful community service with instruction and reflection to enrich the learning experiences, teach civic responsibility, and strengthen communities of students. The emphasis is on **academic** and **personal** development (National Service Learning Clearinghouse).

This month, **Lombard** and **Churchill** students have been competing against each other in a canned food drive. Both schools have collected over 1000 non-perishable items. This was a great learning experience for the students.

GHSN also participated in a major *Service learning project*. The students volunteered at the **Knox Prairie Community Kitchen**. Their role was to prepare and serve food to citizens of the Galesburg community. Thank you!

Service Learning Projects

- *Recycling (technology, paper)
- *Go Green (flowers, plants)
- *Clothing Collection
- *Visit Senior Citizen homes
- *Greetings (Send out cards)

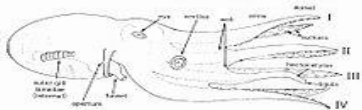
What is going on in Galesburg Community Unit School District #205?

The greatest gifts you can give someone are your time, your attention, your love, and your concern. (Unknown)

Our **Math** teachers have been busy attending workshops and learning new strategies. **Integrated Mathematics** and **Mental Math** are two concepts that are being discussed. **Integrated Mathematics** is a movement towards aligning **Math** curriculum toward Common Core Standards. It stresses the relationship between mathematical concepts and highlights real world applications instead of just memorizing formulas. **Mental Math** also emphasizes building connections between the numbers and number facts. Children are also encouraged to perform these connections and calculations mentally instead of writing them out, and then orally explain their mental calculations.

PARCC has been completed at **Galesburg High School**. We had anticipated that the students were going to take a computerized test. However, the computerized version was not ready at this time. This was still a great learning experience. We garnered the following information from the high school students that can be utilized at all grade levels.

- Although the majority of the students felt prepared, they would like to be exposed to **practice tests**.
- They felt they need to learn to apply more concepts instead of remembering facts and figures.
- We need to read **longer passages** and answer questions.
- Take practice tests with multiple right answers.
- The test asked students to explain their answers.
- Need exposure to test **vocabulary** and **terminology**.
- During the PARCC testing period, they would like fewer assignments in the classes they continue to attend during testing.



*I know at times you feel like an **Octopus** being pulled in many different directions. We are all experiencing information overload. Yet, we succeed in making schools meaningful.*